

For more information on the Xerox 495 Continuous Feed Duplex Printer call **1-800-ASK-XEROX** or visit us on the web at **www.xerox.com**.

XEROX[®]

Technology | Document Management | Consulting Services

Xerox 495 Continuous Feed Duplex Printer

Overview



Specifications

PRINTER

Print Engine	Single Printer Pin-fed Duplex Engine	
Technology	LED	
Fusing Method	Flash Fusing	
Resolution	Input	240 dpi, 300 dpi, 600 dpi
	Output	240 x 240 dpi, 600 x 600 dpi
Print Speed	115 ft/min (35.1 m/min)	
Speed in images per minute	US Letter (216 x 279 mm)	
	Simplex	Portrait: 125
		Portrait 2-up: 251
	Duplex	Portrait: 251
		Portrait 2-up: 502
	A4 (210 x 297 mm)	
	Simplex	Portrait: 118
		Portrait 2-up: 236
	Duplex	Portrait: 236
		Portrait 2-up: 472

PAPER HANDLING

Print Width	600 dpi (or 300 dpi): 17.6"= 447 mm max 240 dpi: 16.7"= 424 mm max	
Print Length	Internal Stacker	7"-14" (177.8 mm-355.6 mm)
	External Output	Up to 28" (.166")
Paper Type	Pin-fed, preprinted, plain, boxed fanfold forms (up to 300 mm (11.8") high, 3,000 sheets (17 lbs/64 gsm) and roll-fed paper	
Paper Weight*	17 lbs-42 lbs/64 gsm-157 gsm	
Paper Width	6.5"-18" (165.1 mm-457.2 mm)	
Paper Length	Internal Stacker	7"-14" (177.8 mm-355.6 mm) by increment of 4.23 mm (.16")
	External Output	3.5"-28" (88.9 mm-711.2 mm) by increment of .16" (4.23 mm)
Pre- and Post-Processing	Xerox Print Line Bus (PLB)	Type 1 interface (requires optional PLB kit.)
		Monitoring all devices along PLB via Stampa user-friendly touch-screen i/f
		Up to 10 PLB interfaces per print line
		Enables mix and match of various pre/post vendor devices in same line
		Support for 3rd-party unwinder and other finishing solutions available

PRINT ENGINE CONTROLLER

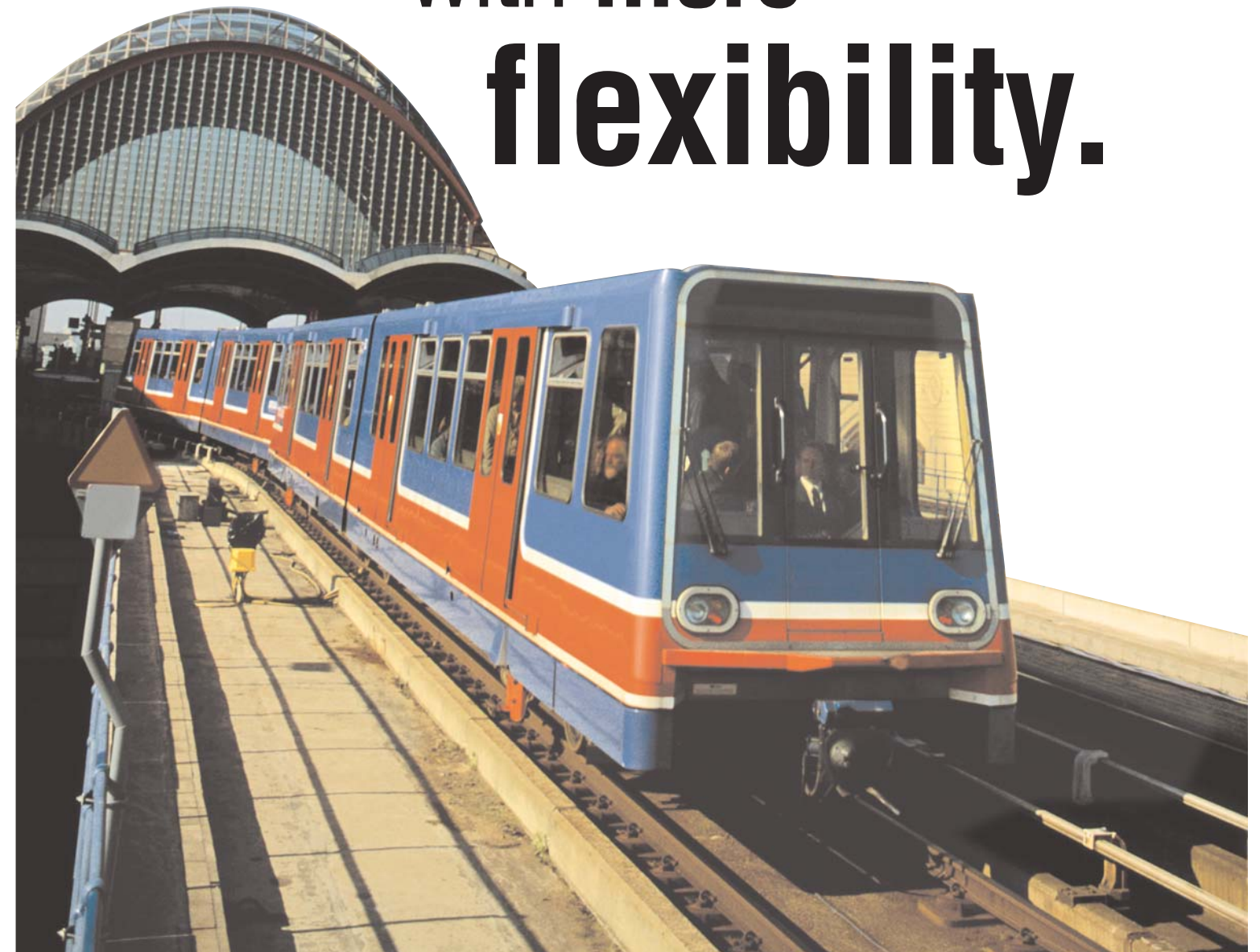
CPU	Intel® Double Xeon™
Memory Capacity	1GB RAM
Capacity	40GB HDD
CD-ROM	Read Write
GUI	Stampa full-color touch screen GUI interface Job setup and control while run
Interface	Up to 2 host connections per print engine
Connectivity	TCP/IP Ethernet Gigabit (Standard)
	IBM® Channel S/370 Interface (Optional)
	Second TCP/IP Ethernet Gigabit (Optional)
Emulation	Native IPDS

INSTALLATION ENVIRONMENT

Dimension	296.5 cm (L) x 89 cm (W) x 170 (H) cm
Weight	1440 kg
Environments	IBM AFP™ via PSF/MVS, PSF/VM, PSF/VSE, PSF 400®, PSF/AIX®, PSF/OS/2® InfoPrint Manager for AIX®, InfoPrint Manager for Windows® NT®/2000
Temperature at sea level	59°F-9.6°F/15°C-32°C
Relative Humidity	40% RH-70% RH (without condensation)
Heat Dissipation	16.2 kW
Noise Level	Printing: 72 dB maximum per engine Standby: 62 dB per engine
Electrical Requirements	50Hz/60Hz 3 phases: 200V-230V 10% via transformer input 380V/415V
Electrical Consumption	Printing: 13 kVA average, 19 kVA maximum Standby: 4 kVA average PLB: 4 W per box

*Paper weights lighter than 17 lbs/64 gsm or heavier than 42 lbs/157 gsm may also be used subject to satisfactory testing for suitability

Go more places with more flexibility.



More substrates. Less space.

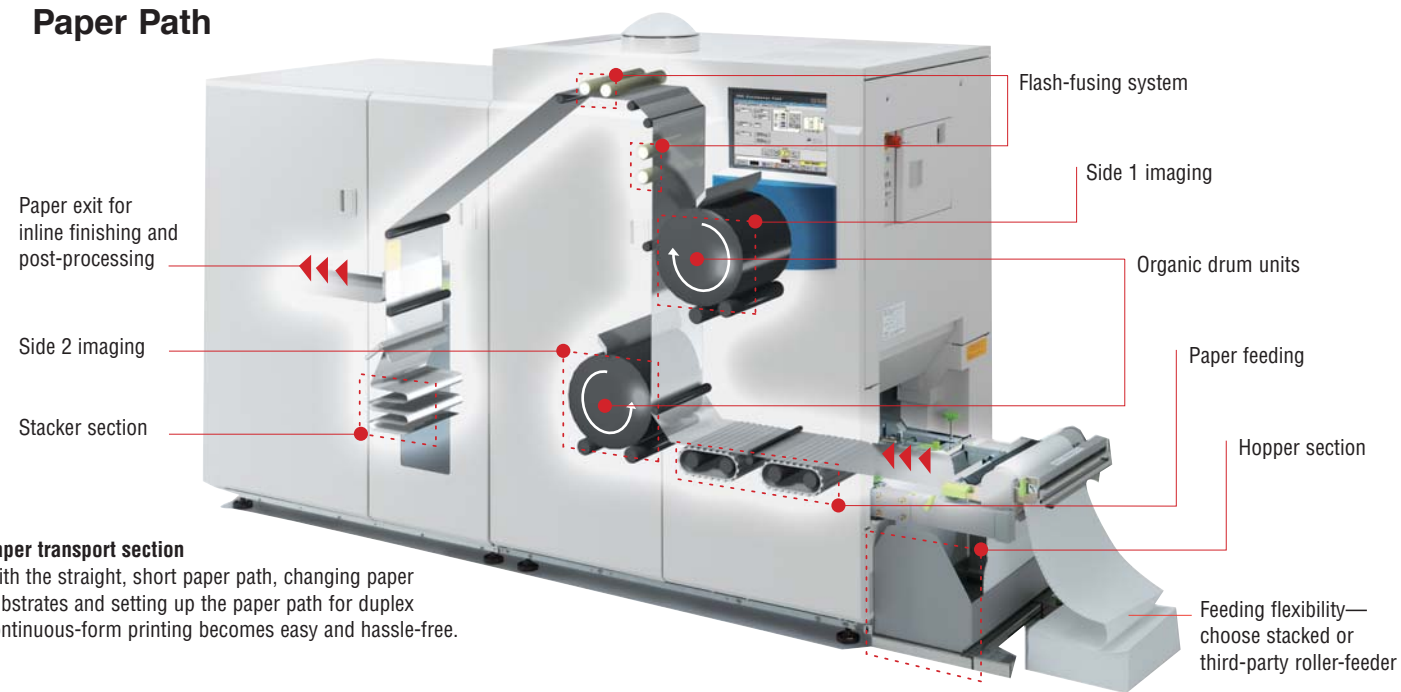
The Xerox 495 Continuous Feed Duplex Printer.

Incorporating a suite of high-performance features, this versatile printer provides invaluable support for efficiency and productivity in mission-critical operations with:

- Continuous high-speed, high-resolution printing at 500 ipm (two-up duplex) and 600 dpi, enabled with flash-fusing technology.
- IPDS compatibility to provide a seamless plug-compatible solution.
- Newly developed duplex printer features two print drums in one space-saving machine.
- PLB Interface allows flexible connection of the pre- and post-processing equipment.
- Excellent image quality ensured by flash fusing and new small-particle toner.



Paper Path



High-speed printing at 500 ipm (two-up duplex) U.S. letter

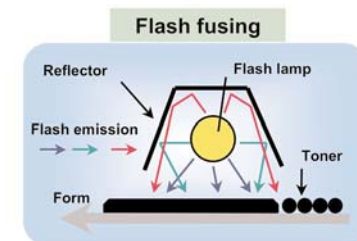
Speeds of up to 500 ipm enable the Xerox 495 Continuous Feed Duplex Printer to process high volumes consistently, month after month.

High productivity with long unattended runs are possible using roll-feed unwinders and automated post-processing finishing devices. The results are improved turnaround time and operational efficiency.

Better image quality with higher resolution—600 dpi

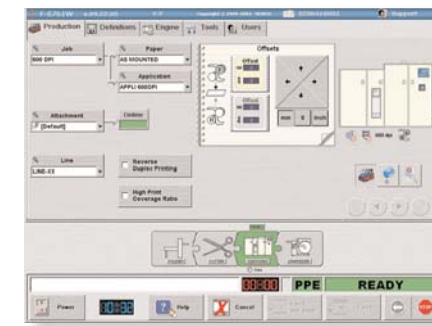
With the Xerox 495 Continuous Feed Duplex Printer, high-density printing with 600 dpi resolution allows photos, halftones, small fonts, superscripts and fine lines to be printed clearly without a drop-off in printing speed. Superior image quality reflects the use of small-particle toner and the non-contact flash fusing technology. This new, cleaner technology ensures even the smallest characters are always legible.

Improved performance with flash-fusing technology



Using flash-fusing technology reduces paper heat and shrinkage and retains proper paper moisture. High-intensity flash lamps heat the toner. Because the toner is fixed without any paper contact, wide varieties of papers can be printed—from normal paper to specialty substrates (plastic card and labels). Other advantages:

- Substrate technology enables printing on stocks with glues and adhesives.
- No heat and no contact mean paper retains moisture and is less susceptible to static electricity buildup.
- Reduced likelihood of media damage allows finishing equipment to work more reliably.



Touch-screen ease for all operations

The built-in Xerox control panel uses a color touch display to enhance visibility and operability. Operations like start-up, setting input data, logical page specification and editing can be performed using the touch display. With software developed independently by Xerox, high-speed RIP is achieved and print data format is compatible with the industry-standard IPDS.

Steady, reliable paper transfer

Extremely reliable, high-precision pin-fed paper transfer minimizes the possibility of registration problems during two-sided printing. Auto-loading enables quick stock changes for box/stack input or via roll unwinder.



Simplex, duplex printing with single printer

With the short paper path, duplex continuous form printing has never been this easy. Using two imaging drums in one machine, the reverse side of the page is printed with the first drum unit while front-side imaging is performed with the second drum. The image is flash fused and then fixed once for each side.

The short duplex paper path uses less paper and minimizes set up time when compared to the traditional duplex approach, which uses two separate print engines.

Multiple substrates

The Xerox 495 Continuous Feed Duplex Printer handles a wide variety of applications—from paper widths of 6.5" to 18" and paper weights of 64 gsm to 157 gsm, to specialty papers like labels, ID cards, RFID transponders and tags.



Flexible connection with PLB Interface

The Print Line Bus (PLB) enables intelligent communication with up to 10 devices by connecting each device in the print line. The PLB allows you to monitor the pre- and post-processing equipment and the printer through the GUI, thus providing an end-to-end solution for improved productivity.



Small footprint

The Xerox 495 Continuous Feed Duplex Printer takes up just half the space required for traditional duplex printing (using two simplex printers). This provides customers who have limited space with the ability to have complete duplex redundancy and backup in the same footprint.